



## B1™ COAT

Want a feature-laden set of gear without breaking the bank? Then the B1™ was tailor-made just for you. It has all of the “every day gotta-have” features that you need to get the job done. Features the competition sells as options, the B1™ has as standard.

All at a price you can afford.

Better yet, OSX B1 is in-stock, on-the-shelf in our Standard Material Configuration.

Style OSX BA3207K  
shown in  
Standard OSX  
B1 Material  
Configuration



EasyGrip™ DRD for quick response in emergency situations

32" length coat is a standard in the fire industry

Compliant to the current 2018 Edition of  
NFPA 1971 Standard on Protective  
Ensembles for Structural Firefighting

**3M** | **Scotchlite™**  
Reflective Material



**Kevlar. Nomex.**

## B1™ Coat Standard Features



Low profile 3" Collar and scooped profile Throat Tab protect without interfering with any SCBA.



Contour-cut Sleeve ergonomically curved so it bends like the human anatomy, giving greater freedom of movement.



Set-in Sleeve distributes the weight of the coat evenly over the shoulders.



An extra layer of thermal liner in the shoulders protects from heat buildup in areas of high compression.



3.25" Storm Flap provides plenty of thermal protection. Closure secures with FR Velcro®.



Cuffs feature Black Stedshield reinforcement with a 5" deep Sleeve Well, great for interfacing with wristlet or gauntlet gloves.



7" Black Kevlar® Wristers with thumb hole attached to Black Stedprene Sleeve Wells.



Radio Pocket with Mic Strap lined with moisture barrier. Antenna Notches left and right.



Universal Flashlight Holder fits any flashlight.



Large 2" x 8" x 8" Expansion Pocket lined with Kevlar® Twill for additional tools. Hand-warmer Pocket Slots behind expansion pocket.



Easy access Velcro® Liner Inspection Port in hem of garment for ease of liner inspection.



## Feature List

- 32" Length Coat
- Plastic Delrin® YKK® Zipper/Velcro® Closure
- NYC Style Lime/Yellow 3M™ Scotchlite™ Reflective Material for enhanced visibility - Double Stitched
- Easy Grip™ DRD
- Low Profile 3" Collar with Hanger Loop
- Set-In Pleated Ergonomically Curved Sleeves
- 7" Black Kevlar® Thumbhole Wristers
- 5" Deep Black Stedprene® Sleeve Wells
- Black Stedshield Coat Cuff Reinforcements – Double Stitched
- 2" x 3.5" x 8" Radio Pocket with Velcro® Antenna Opening on each side of Flap
- Self Mic Strap above Radio Pocket
- Universal Flashlight Holder
- 2" x 8" x 8" Coat Expansion Pockets with Handwarmer
- Liner Inspection Velcro® Opening

## OSX B1™ Standard Materials

Coat: BA3207G

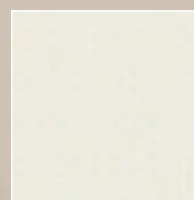
Pant: BA3307G



6.6 oz. Khaki Pioneer Outer Shell



Defender® M Brass NP Thermal Liner



Stedair 3000® Moisture Barrier



## B1™ PANTS

Sometimes all you need are the basics, with no bells and whistles. The B1™ provides the basics, plus features pulled from our B2™ line of gear.

The protection you need.

All at a price you can afford.

Better yet, OSX B1 is in-stock, on-the-shelf in our Standard Material Configuration.

**Style BA3307K  
shown in  
Standard OSX  
B1 Material  
Configuration**



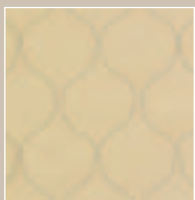
### OSX B1™ Standard Materials

Coat: BA3207G

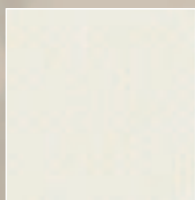
Pant: BA3307G



6.6 oz. Khaki  
Pioneer Outer Shell



Defender® M Brass  
NP Thermal Liner



Stedair 3000®  
Moisture Barrier

Low-rise 3" Bib

Quick take-up straps  
for easy adjustments

Double-stitched  
Stedshield® cuffs

## B1™ Pant Standard Features



Low-rise Waist with small 3" Rear Bib for overlap protection.



Hook and Dee with FR Velcro® Closure on Square Cut Fly.



Take-up Straps with high temp Delrin® Buckles (no metal!) make adjustments quick and easy.



2" x 10" x 10" Expansion Pockets lined with Kevlar® Twill for durability.



SideKick™ Knee Pad extends the knee panel to the outside of the leg. SideKick™ reduces abrasion when pushing with the side of the knee.



Optional Foam Knee Padding makes sustained crawling more comfortable. Order option PO-FMKP.

## Black-Ops™ Suspenders!



## Feature List

- Low-Rise Waist Design with small 3" Rear Bib for Overlap Protection
- Side Take-Up Straps with low-profile High Temp (HT) Delrin Sliders for easy adjustment
- Pant Closure: Hook & Dee, Snap with Velcro® Fly Closure
- 2" x 10" x 10" Pant Expansion Pocket lined with Kevlar® Twill
- Black Stedshield Double Padded Knees with Side Kick Extension Panel
- Black Stedshield Pant Cuff Reinforcements – Double Stitched
- Lime/Yellow 3M™ Scotchlite™ Reflective Material for enhanced visibility – Double Stitched
- Reverse Boot Cut
- Black-Ops Multi Adjust Suspenders – No Metal Suspender Buttons!

Compliant to the current 2018 Edition of NFPA 1971 Standard on Protective Ensembles for Structural Firefighting



## B1™ Proximity Gear



The Proximity Series combines the quality custom features of the MTS ordering program, with a highly reflective aluminized layer. When you have to face high temperatures or high risk situations, the Proximity Series provides the ultimate protection.

**Coat Style: BAC17**  
**Pant Style: BAP17**

