



General Specifications:

-

GENERAL CONSTRUCTION:..... WELDED CARBON STEEL
WELD CERTIFICATION:..... AWS - D1.1
MATERIAL:..... ASTM A36 STEEL

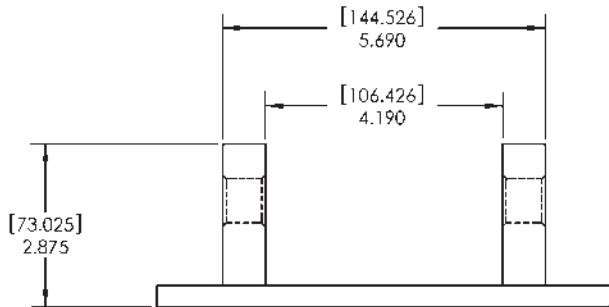
GENERAL DIMENSIONS:..... LENGTH - 9.0"
 WIDTH - 8.0"
 HEIGHT - 2.9"
 WEIGHT:..... 12 LBS. (5.5 KG.)

TORSIONAL PROOF LOAD:.....20,274 FT.-LB. (27,488 N-M) AT PIN HOLE CENTER
EQUIVALENT LOAD & ANGLE:... 5400 LB. (2449 KG.) TENSILE FORCE APPLIED AT A POINT 55 INCHES (1.4 M) ABOVE PIN HOLE CENTER
AT AN ANGLE OF 55 DEGREES OFF OF VERTICAL.
RATING:.....3 PERSON FALL ARREST ANCHORAGE WHEN USED IN CONJUNCTION WITH AN APPROVED FALL
ARREST POST AND 900 LB. MAF DEVICES ON ALL CONNECTIONS AND INSTALLED ACCORDING TO
GUIDELINES BELOW

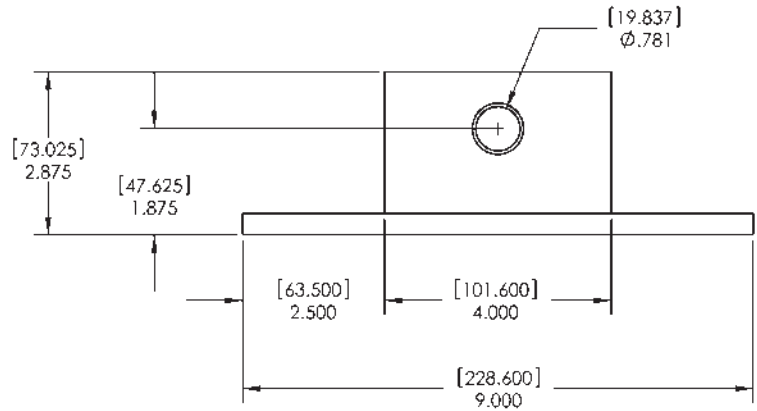
! WARNING! - FAILURE TO COMPLY WITH MOUNTING REQUIREMENTS WILL VOID ANY WRITTEN OR IMPLIED RATING AND COULD RESULT IN SERIOUS INJURY OR DEATH



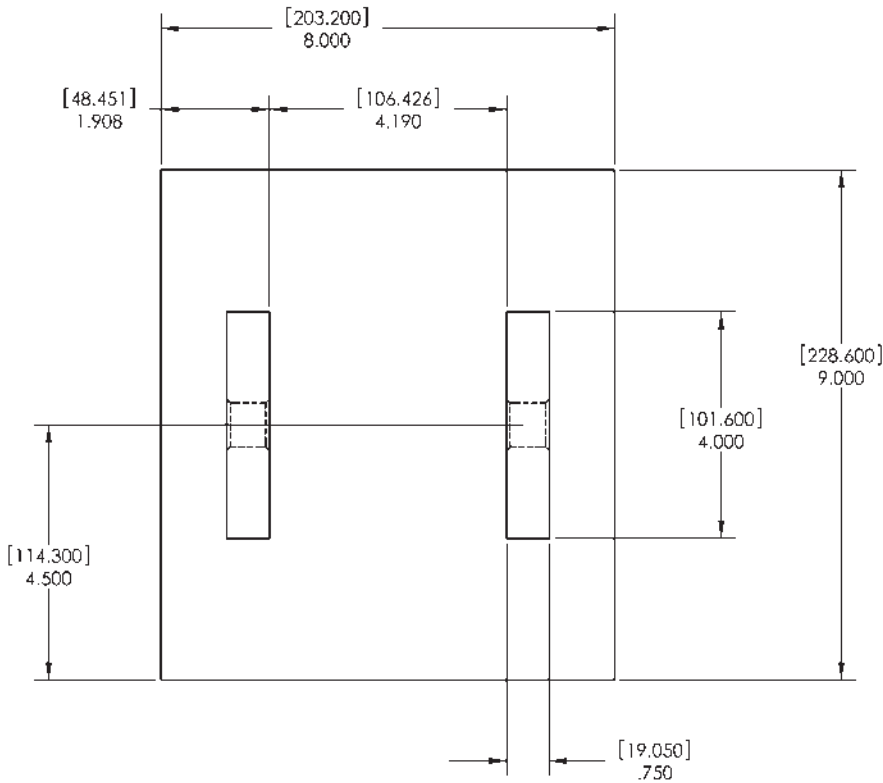
Product Specifications



MODEL #FB-SW1
FRONT VIEW



MODEL #FB-SW1
SIDE VIEW



MODEL #FB-SW1
TOP VIEW

Dimensions displayed in;
inches [millimeters]



2500 S. Tejon St.

Englewood, CO 80110

Ph: 1-800-525-8460, (303) 936-7432

Fax: (303)934-5581

Web: www.pelsue.com E-mail: sales@pelsue.com