

## **CRES GUARD<sup>®</sup> MOBILE DECONTAMINATION UVC+HEAT**

### **OPERATING and MAINTENANCE INSTRUCTIONS**

**Model #CGUV57A**

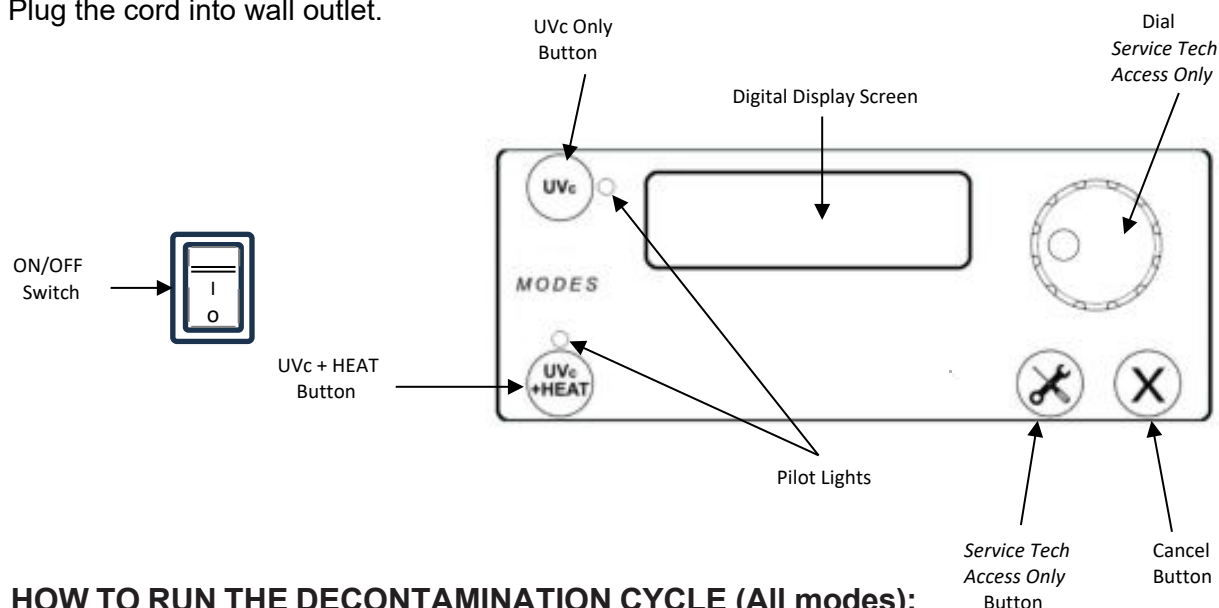
Model no.	Volts	Watts	Amps	Hertz	Phase	NEMA
CGUV57A	120	1300	12.5	60	1	5-15P

#### **HOW TO INSTALL UNIT:**

1. Place cabinet on level floor, in a well-ventilated area.
2. unpack and install parts for hangers or racks.
3. Plug the cord into wall outlet.

#### **FIRST TIME OPERATION:**

1. Wipe the inside clean with detergent and hot water



#### **HOW TO RUN THE DECONTAMINATION CYCLE (All modes):**

- Read all instructions before operating the Decontamination Cabinet.
- Turn on the device by pressing the ON/OFF Switch. The switch light will come on.
- When the display shows the actual cabinet temperature, it's ready for use. The actual temperature is denoted by 'a' next to the temperature reading.

#### **UVC mode only**

1. Once the unit is turned on, load the items evenly on the wire grids or bars as necessary. Avoid placing items close to each other to avoid shadows.
2. Press the UVC touch button. This activates the unit's UVC light-only disinfection mode. The numeric display will start a 15-minute timer countdown until the end of the cycle. The timer is denoted by a 't' next to the time.
3. Once the cycle is complete, the unit beeps and displays the actual cabinet temperature.
4. The items may now be removed.



MOBILE DECONTAMINATION	FL-2433
Rev. 6	Page 2 of 9

## **UVc + HEAT mode**

1. Once the unit is turned on, load the items evenly on the wire grids or bars as necessary. Avoid placing items close to each other to avoid shadows.
2. Press the “UVc+HEAT” touch button. The display will start with a 30-minute countdown. The timer is denoted by a ‘t’ next to the time. UVc + HEAT setpoint is 120°F for 30 minutes.
3. Once the cycle is complete, the unit beeps and displays the actual cabinet temperature.
4. The items may now be removed.

- ***The UVc+ HEAT cycle is not recommended for electronic devices.***

***These cycle times and temperature conditions are preset by the factory and are locked to prevent modification and ensure repeatability.***

## **DIGITAL CONTROL NOTES:**

- Cancel any cycle by pressing of the “cancel” button twice:
  - The first press to stop the current cycle at which time a “CnCL?” is displayed prompting a confirmation.
  - The second pressing verifies and executes the cancellation. The actual temperature will be displayed.
  - If the two presses are not made within 4 seconds, the cycle continues.

***The unit now resets to the initial “on” stage to await a new cycle selection.***

## **DOOR SAFETY NOTES:**

- Opening the door during a cycle displays ‘door open’ and ‘Proc CnCLd’ denoting the program/cycle is canceled.
- The UVc bulbs are turned off anytime the door is opened.
- Once the door is closed, the display reads ‘door CLSEd’ for door closed and ‘Prog rStEd’ denoting the program/cycle is restarting from the beginning.

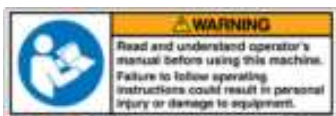




## **SERVICE ONLY:**

- The  button and the dial are exclusively for use by the Service Technician. Pressing them will not initiate any action.



MOBILE DECONTAMINATION	FL-2433
Rev. 6	Page 3 of 9

#### SAFETY HAZARD INFORMATION:

 or 	<p>The operator must read and familiarize themselves with the manual before using the machine.</p>
 or 	<p>This product can expose you to chemicals including Mercury, which is known to the State of California to cause Developmental Toxicity. For more information go to: <a href="http://www.P65Warnings.ca.gov">www.P65Warnings.ca.gov</a></p> <p>UV light warning. Do not operate with safety devices removed or defeated.</p>
	<p>Electrical shock risk hazards can cause injury or death when electrical connections or live wiring are exposed.</p> <p>Do not remove any cover</p>

- *The appliance is not to be used by persons (including children) with reduced physical, sensory, or mental capabilities, or lack of experience and knowledge, unless they have been given supervision or instruction.*
- *Children being supervised are not to play with the appliance*
- *If the supply cord is damaged, it must be replaced by the manufacturer, its service agent, or similarly qualified persons in order to avoid a hazard.*
- *If the supply cord is damaged, it must be replaced by the manufacturer, its service agent, or similarly qualified persons in order to avoid a hazard.*



## DAILY MAINTENANCE:



### CABINET

1. Wipe the inside of the cabinet after daily use.
2. **LEAVE DOORS SLIGHTLY OPEN TO FULLY DRY INTERIOR.**



### BEFORE CLEANING CABINET:

1. **Allow cabinet to cool.**
2. **Do NOT hose down cabinet with water.**
3. **Do NOT get water on controls.**
4. **Do NOT use abrasives or harsh chemicals.**

**WARRANTY COVERAGE MAY BE AFFECTED WITHOUT PROPER CLEANING.**

### Cleaning hints:

1. Wipe up spills as soon as possible.
2. Clean cabinet regularly to avoid heavy dirt build-up.
3. Make a test spot with cleaner.
4. Follow manufacturer's directions on cleaner.
5. Do not mix cleaners.
6. Avoid drips and splashes.
7. Do not use "Cres Clean" on plastic parts or labels.

## HOW TO CLEAN THE UNIT:

	Type of cleaning	Cleaner	Method
<b>CABINET</b> Inside (Aluminum) and Outside (Stainless Steel)	ROUTINE CLEANING Interior (Aluminum)/exterior (Stainless) surfaces	Soap, ammonia, or *mild detergent and water.	1. Wipe with cloth. 2. Rinse with water. 3. Wipe dry.
	HARD WATER SPOTS and SCALE	Vinegar	1. Swab or wipe with cloth. 2. Rinse and dry.
*Mild detergents include soaps and non-abrasive cleaners.			

**NOTE:** Gaskets are removable for cleaning.



***Electrical shock risk hazard can cause injury or death when electrical connections or live wiring are exposed.***  
***Do not remove the cover housing the electrical components.***  
***\*Service on the unit needs to be performed by qualified personnel.***

## TROUBLESHOOTING CHART:

### FAILURE:

1. Switch light or control display does NOT light up.
2. Unit gets too hot or will not shut off.
3. Unit does not heat.
4. UV lights do not turn on.
5. UV light bulb(s) need replacement.
6. Thermostat control reads "err 00".

### POSSIBLE CAUSE/SOLUTION:

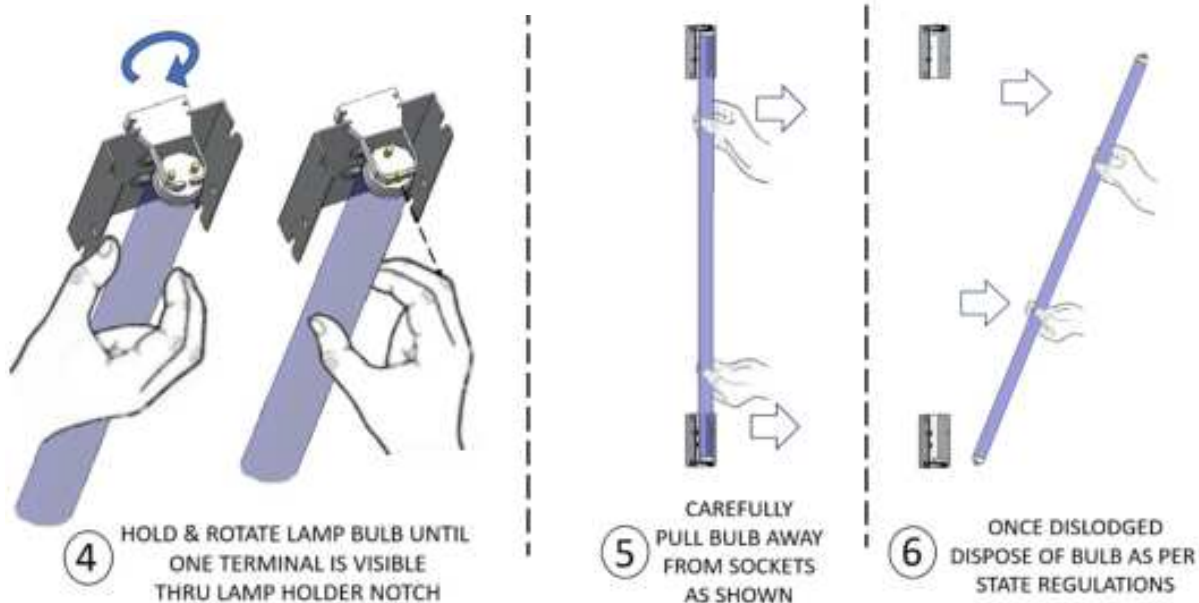
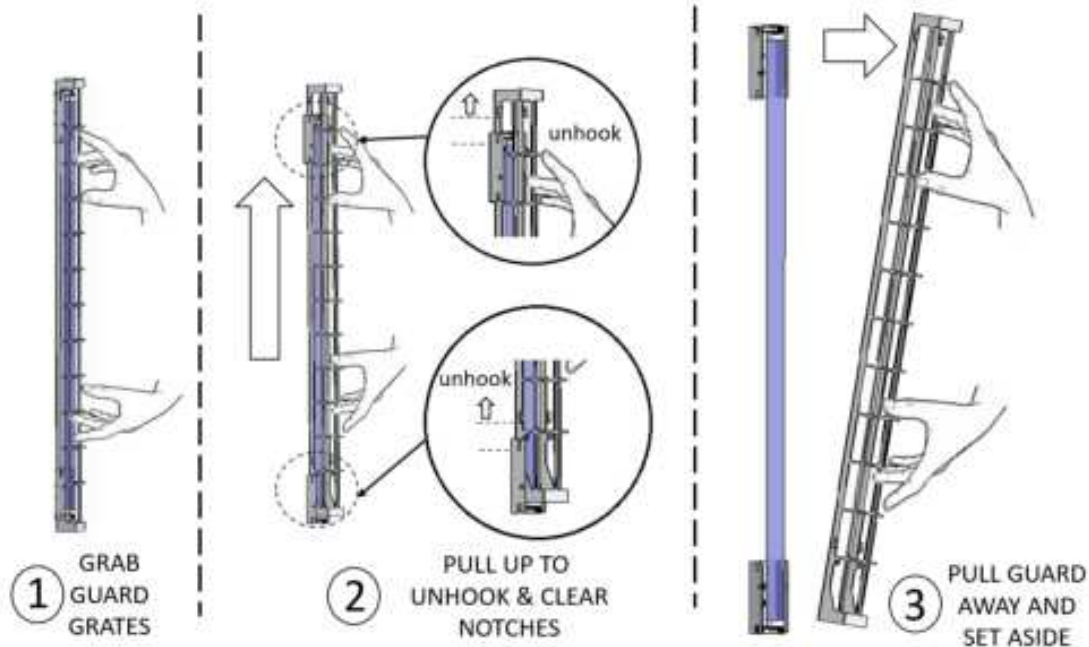
- 1a. Circuit breaker/fuse to wall outlet is blown.  
1b. Cord is unplugged from wall outlet.  
1c. Switch is "OFF."  
1d. Switch or control defective.
- 2a. Relay or control defective.  
***UNPLUG UNIT FROM WALL OUTLET.***
- 3a. Defective heater, relay, blower, or control.
- 4a. Inspect for failed/blown bulbs. The left-side bulbs are in series. The right-side bulbs are in series.  
4b. Verify that the lamp is set correctly in its sockets.  
4c. Check door switches relay.
- 5a. If bulb change is required refer to Safety Data Sheet (Page 5) for bulb disposal instructions and special precautions.  
5b. Bulbs should be replaced as a set.
- 6a. Temperature probe defective.

## CRES GUARD. MOBILE DECONTAMINATION UVC+HEAT OPERATING and MAINTENANCE INSTRUCTIONS

Model # CGUV57A

### REPLACING THE UV BULB:

\* UV bulb replacement is similar as for regular fluorescent bulb



### 7 INSTALLATION OF NEW BULB IS THE REVERSE OF REMOVAL





## Safety Data Sheet

<b>Products:</b> Cres Guard Mobile Decontamination UVC+HEAT	
<b>Description:</b> Device	
<b>Manufacturer</b>	<b>Emergency Telephone Nos.</b>
Crescent Metal Products, Inc. 5925 Heisley Road Mentor, OH 44060-1833 EPA EST#: 102899-OH-1	For Medical Emergencies, call local hospitals or medical facilities
<b>II Health Hazard Data</b>	<b>III Hazardous Ingredients</b>
UV-C light rays can harm people when exposed directly from a close distance, especially to the eyes. Exposure to UV-C rays can cause sunburn, suntan, skin aging, and in extreme cases skin cancer. If the eye's exposed to the rays, it may cause cataracts. In case of a lamp bulb breakage mercury could be exposed. Mercury may have toxic effects on the nervous, digestive, immune systems, on the lungs, kidneys, skin, and eyes. <b>FIRST AID:</b> Stop all exposure to mercury and seek medical attention. <b>EYE CONTACT:</b> (UVc) Call an ophthalmologist. (mercury) not harmful <b>INHALATION:</b> (mercury) In case of flu-like illness, seek medical attention <b>SKIN CONTACT:</b> (UV-C ray or mercury) Call a dermatologist/seek medical attention.	None of the materials in this product are on the IARC, OSHA, or NTP carcinogen lists.  Mercury in the UV bulb is a hazardous substance as defined by 29 CFR Part 1910.1200 (OSHA).  Elemental Mercury/vapor in UVc bulb  CASRN 7439-97-6
<b>IV Special Protection and Precautions</b>	<b>V Transportation and Regulatory Data</b>
No special protection is required while operating the mobile UV and Heat sanitizer as instructed in the operator's manual. Do not defeat or circumvent the protective devices. Unshielded UV- C light can cause injuries if not handled correctly. Use protective gloves when handling broken bulb glass fragments. Scoop broken glass with cardboard, use tape on smaller pieces.	<u>DOT/IATA/IMDG:</u> Not restricted. <u>EPA:</u> This product contains no chemicals which are regulated under Section 313 or under Section 304/CERCLA.
<b>VI Spill Procedures/Waste Disposal</b>	<b>VII Reactivity Data</b>
<u>In case of UV lamp breakage:</u> <b>DO NOT VACUUM;</b> Ventilate the room, Use protective gloves when handling broken bulb glass fragments. Scoop broken glass with cardboard, use tape on smaller pieces. Use wipes/wetted rags to clean up the breakage area. Refer to the operator's manual for detailed instructions. <u>Waste Disposal:</u> Dispose of UVc bulbs in accordance with applicable federal, state, and local regulations.	Stable under normal use and storage conditions.
<b>VIII Fire and Explosion Data</b>	<b>IX Physical Data</b>
The device is made exclusively of flame-retardant materials. Fire containment meeting UL-499	57.6" H, 28.75" W, 32.7" L Containing 4 x T8 UV lamps.



## REPLACEMENT PARTS

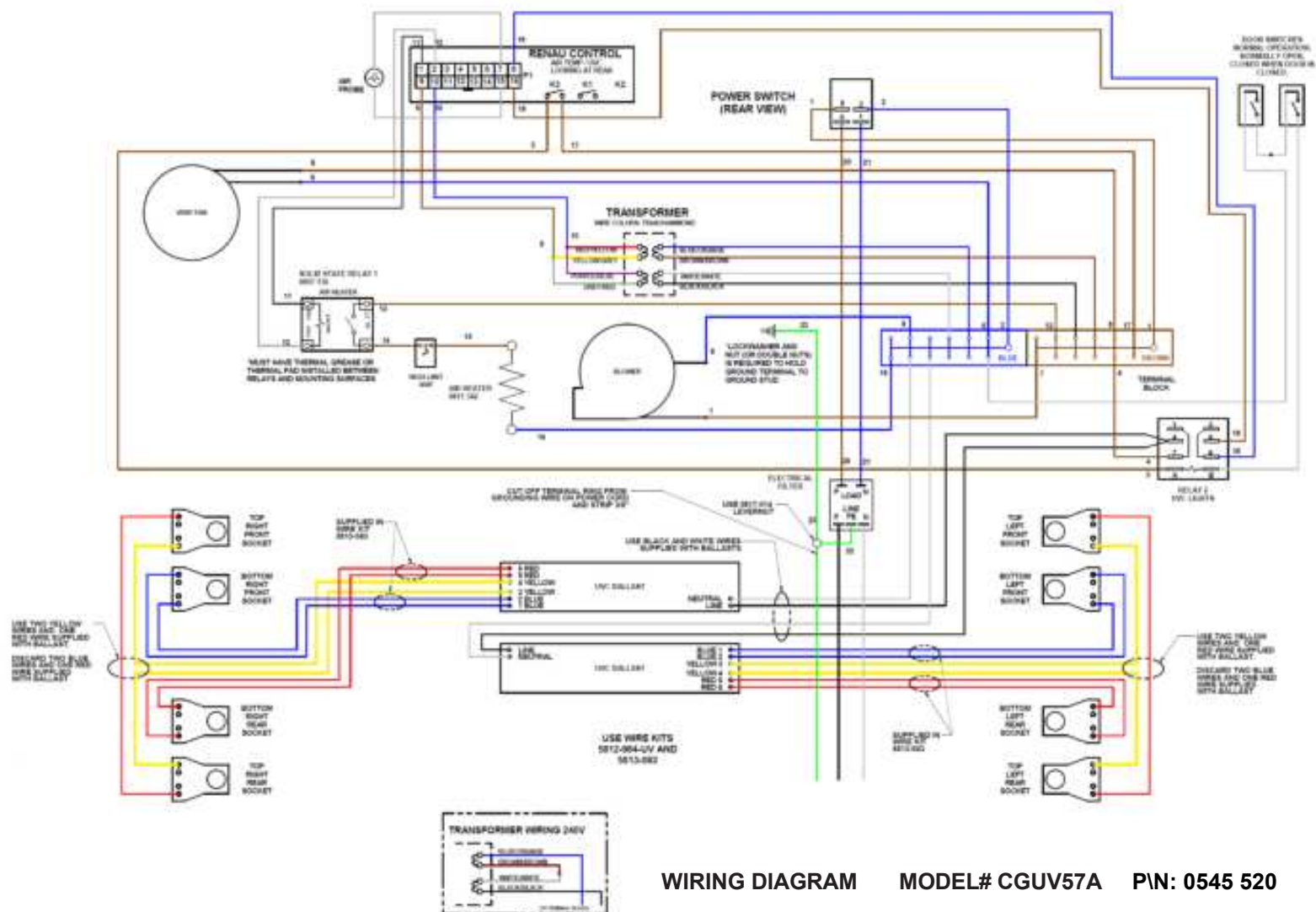
### 120V

Blower Kit		0769-180-K
Heater Kit, Air	1200W	0811-342-K
High Limit - 400°F		0848-033
Power Cord	1800W	0810-029-06
Relay, Solid State		0857-136
Relay, UVc Lights		0857-100
Switch, Power		0808-136
Temp Control		0848-092-43
Thermostat Probe		0848-091-K
Terminal Block, Brown		0852-141
Terminal Block, Blue		0852-137
Transformer		0769-197
Vent Fan		0769-165
Door, Gasket (Magnetic)		0861-236
Door Hinge		0519-087-K
Catch, Door Hasp		1246-031
Door Latch		1006-122-01-K
Casters, 5"		0569-306-K
Casters, 5" w/brake		0569-306-BK
Angles (Stainless Steel)		0689-143
Wire Rack		1170-005
Post		0696-317
Hanger Support		6153-085
Ballast, Fluorescent Lamp		0769-223
Door Switch Assembly		0808-141
Door Switch Magnet Assembly		1447-032
Bulb Guard		1493-030-01
Bulb Socket		0819-003
Noise Filter		0858-010





MOBILE DECONTAMINATION	FL-2433
Rev. 6	Page 9 of 9



WIRING DIAGRAM MODEL# CGUV57A PN: 0545 520